



BMC **COMPETITION**
CATALOGUE

FORMULA JR. RACING CARS

**FORMULA JR.
KITS & COMPONENTS**

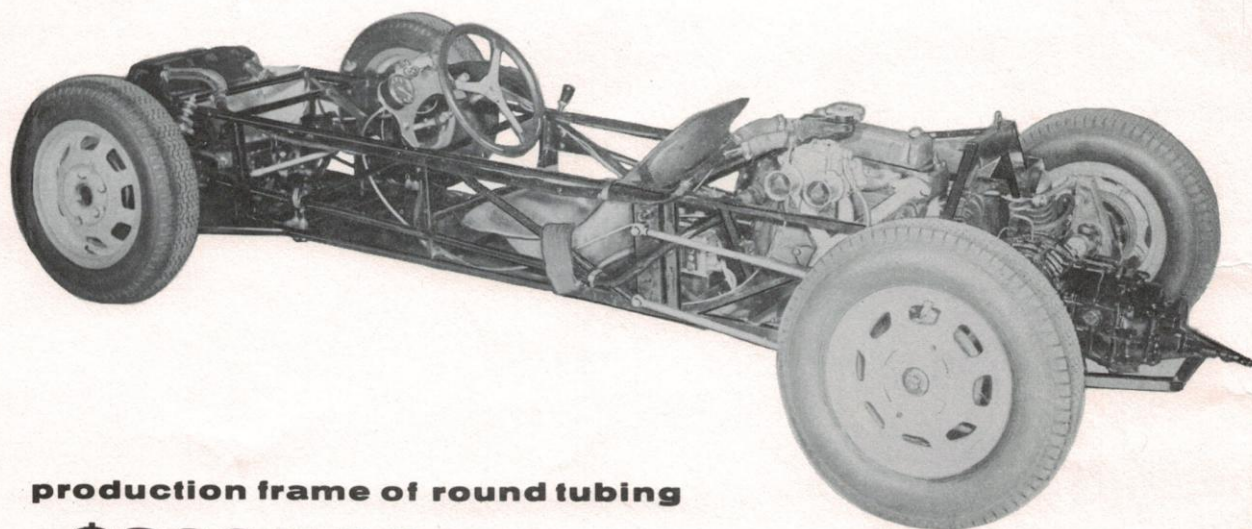
**SPORTS CAR
RACING EQUIPMENT**

RACING ACCESSORIES



BRITISH MOTOR CAR DISTRIBUTORS, LTD. • 1200 VAN NESS AVENUE • SAN FRANCISCO • CALIFORNIA

BMC FORMULA JR. MARK II (REAR ENGINE)



production frame of round tubing

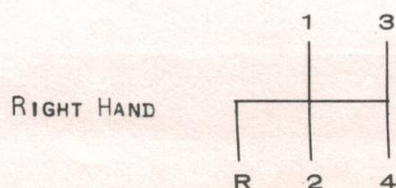
\$3995.00

(F.O.B. SAN FRANCISCO)

TECHNICAL SPECIFICATIONS

ENGINE	BMC TYPE A.	CHASSIS
BORE:	2.540	FRAME: HELI ARC WELDED STEEL TUBING 16 GA
STROKE:	3.000 IN.	SPRING SHOCK UNITS: FRONT AND REAR
DISPLACEMENT:	996 CC	WEIGHT: 798 LBS.
COMPRESSION RATIO:	11.25:1	WHEEL BASE: 85"
CARBURETOR:	45 MM WEBER	TRACK F: 47"
CLUTCH:	7" DRY DISC	TRACK R: 47"
EXHAUST:	TUNED HEADERS	OVERALL HEIGHT: 31"
CRANK:	SPECIAL STEEL FORGING	WHEELS: 13" x 4-1/2" FRONT - 13" x 5" REAR
BEARINGS:	LEAD INDIUM OR COPPER LEAD.	OF MAGNESIUM ALLOY (7 LBS).
CYLINDER HEAD:	EXTENSIVELY MODIFIED RE-CONTOURED COMBUSTION CHAMBERS - LARGE VALVES & PORTS - DUAL SPRINGS.	TIRES: FRONT 5.20 x 13 REAR 5.90 x 13 OR 6.40 x 13
CAMSHAFT:	BMCD RACE PROVEN HIGH LIFT.	BRAKES: 8" x 1-1/2" DOUBLE LEADING SHOE SEPARATE SYSTEM FRONT AND REAR

SHIFT PATTERN



ENGINE

OUR ENGINE, THE RACE PROVEN BMC TYPE A, HAS BEEN FULLY MODIFIED, USING SPECIAL CAMS, PISTONS, CRANKSHAFT, SPECIALLY MODIFIED CYLINDER HEAD, LARGE VALVES AND SPECIAL MANIFOLD USING WEBER CARBURETORS. THIS ENGINE AS FURNISHED IN THE BMC Mk. II Jr. PRODUCES OVER 80 HP AND HAS A WIDE USEFUL RPM RANGE FROM 4200 TO 7500 RPM. THIS ENGINE HAS A REPUTATION AS THE MOST RELIABLE, EASIEST TO MAINTAIN AND LEAST EXPENSIVE IN THE FORMULA JR. FIELD.

TRANSMISSION

FOUR SPEED VW TRANSMISSION WITH SPECIAL CLOSE RATIO GEARING. THIS TRANSMISSION IS MATED TO THE BMC ENGINE WITH OUR SPECIAL ALUMINUM ADAPTOR.

SUSPENSION

FRONT: CONVERGING A ARMS GIVING SLIGHTLY RAISED ROLL CENTER, INCLINED COIL SHOCK UNITS. LIGHTEST RACK AND PINION STEERING.

REAR: INDEPENDENT USING A ARMS AND LEADING LINKS. THIS SYSTEM IS FULLY AND QUICKLY ADJUSTABLE TO SUIT INDIVIDUAL PREFERENCE IN HANDLING CHARACTERISTICS. CAST MAGNESIUM AXLE HOUSINGS, HEAVY DUTY AXLE AND BEARING ASSEMBLY.

WHEELS

MAGNESIUM ALLOY, HEAT TREATED, EXTREMELY STRONG AND LIGHT - 13" x 4-1/2" FRONT, 13" x 5" REAR, WEIGHT 7.5 LBS. (APPROX).

BRAKES

VERY POWERFUL 8" x 1-1/2" DOUBLE LEADING SHOE BRAKES ARE FURNISHED, GIVING EXCELLENT STOPPING POWER AND LONG LIFE. BRAKES ARE ADEQUATELY COOLED, DUE TO PUMPING ACTION OF THE INNER STIFFENING WEBS ON THE MAGNESIUM WHEELS.

FRAME

HELI ARC WELDED FROM HIGH STRENGTH, LIGHT WEIGHT TUBING. FRAME AFFORDS VERY HIGH DEGREE OF RIGIDITY. ROLL BAR IS BUILT INTO FRAME FOR MAXIMUM SAFETY.

BODY

THE BODY HAS HIGH PENETRATION AND LOW DRAG CHARACTERISTICS. IT IS COSTRUCTED IN GLASS FIBRE, GIVING GOOD IMPACT STRENGTH. THE COLOR IS IMPREGNATED IN THE GLASS AND THE BODY IS MADE IN EASILY REPLACED SECTIONS.

BMC FORMULA JR. MARK II KITS

3

complete kit \$3495.00

(FOB SAN FRANCISCO)

THIS KIT IS THE COMPLETE MARK II CAR, LESS BATTERY AND TIRES. IT IS INTENDED FOR THE RACING ENTHUSIAST WHO LIKES TO DO HIS OWN WORK. NOT ONLY WILL THE BUYER HAVE THE OPPORTUNITY TO KNOW HIS CAR FROM THE GROUND UP, BUT OVER \$500 WILL BE SAVED (COUNTING SHIPPING) TO APPLY TO THE SEASONS RACING EXPENSES.

(BATTERY AND TIRES NOT INCLUDED BECAUSE OF SHIPPING DIFFICULTIES AND EXPENSE)

economy kit \$1995.00

(FOB SAN FRANCISCO)

THIS KIT IS DESIGNED TO GIVE THE (DO IT YOURSELF) RACING ENTHUSIAST A CHANCE TO COMPETE ON PAR WITH THE MORE EXPENSIVE FACTORY CARS. THIS KIT CAN BE ASSEMBLED COMPLETELY WITH THE USE OF ONLY ORDINARY MECHANICS TOOLS, NO WELDING REQUIRED. ENGINE AND GEAR BOXES MAY BE PICKED UP LOCALLY, NEW OR USED, AT ECONOMY PRICES AND MODIFIED TO SUIT THE OWNERS OWN IDEAS. INEXPENSIVE TUNE UP COMPONENTS ARE AVAILABLE. THIS KIT CAN BE USED TO HOUSE BMC, FORD 105E, FIAT, SIMCA OR OTHER TYPES OF ENGINES, WITH VERY SLIGHT MODIFICATIONS (ENGINE MOUNTING POINTS).

SUPPLIED LESS ENGINE, GEAR BOX, TIRES, BATTERY AND OIL COOLER, AND FITTED WITH PRESSED STEEL WHEELS.

OPTIONAL EXTRAS WITH ABOVE

CAST MAGNESIUM WHEELS, IN PLACE OF PRESSED STEEL	\$120.00
OIL COOLER	\$ 32.00
ENGINE TO GEARBOX ADAPTOR RINGS	
BMC TO VW	\$ 48.00
FORD TO VW	\$ 48.00
PILOT BEARING ADAPTOR	\$ 8.00
MACHINED VW AXLE SHAFT EXCHANGE	\$ 22.50 EACH

BMC FORMULA JR. COMPONENTS

4

1. FRONT SUSPENSION ASSEMBLY

\$167.39

ADDITIONAL PARTS FOR FRONT SUSPENSION:

SHOCK-SPRING ASSEMBLY

\$25.00 EA

DRUMS

\$12.00 EA

BRAKE ASSEMBLY PER WHEEL

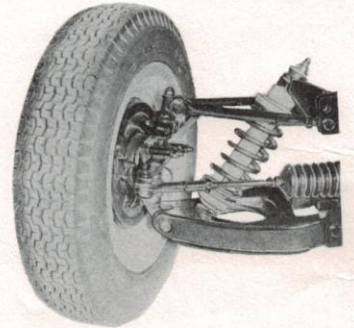
\$24.00

MODIFIED RACK AND PINION STEERING

\$85.00

STEERING ARMS

\$6.00 EA



2. REAR SUSPENSION (for rear engine)

\$395.00

ADDITIONAL PARTS FOR REAR SUSPENSION:

SHOCK SPRING ASSEMBLY

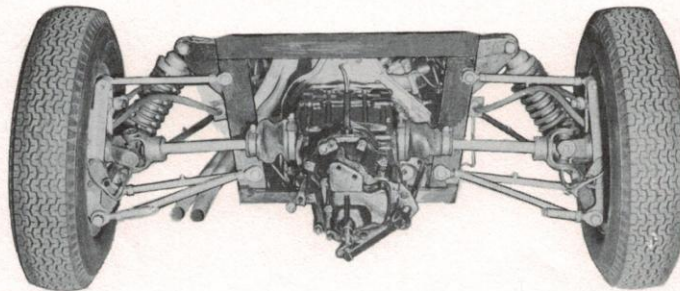
\$27.50

DRUMS

\$12.00

BRAKE ASSEMBLY

\$26.50



3. REAR SUSPENSION (for front engine)

\$395.50

ADDITIONAL PARTS FOR REAR SUSPENSION:

SHOCK SPRING ASSEMBLY

\$27.50

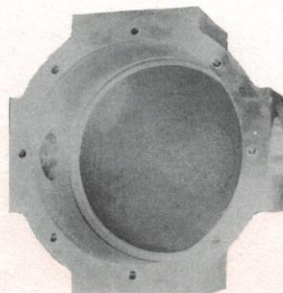
DRUMS

\$12.00

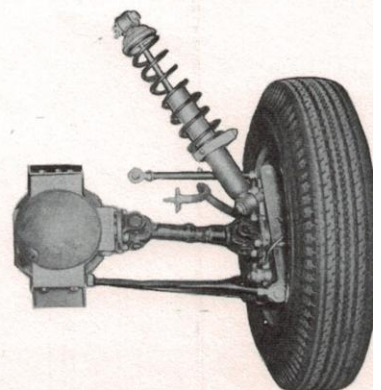
BRAKE ASSEMBLY

\$26.50

DIFFERENTIAL CASE (with stub axle assemblies)



\$199.50

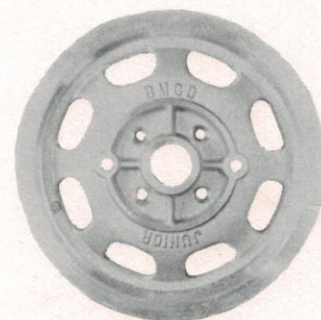


4. 13" MAGNESIUM WHEELS

5

EXTREMELY STRONG AND LIGHT IN WEIGHT. IMPROVES GREATLY THE SPRUNG TO UNSPRUNG WEIGHT RATIO. IMPROVES HANDLING AND ELIMINATES WHEEL TRAMP SO COMMON TO EXTREMELY LIGHT CARS. THESE WHEELS ARE MADE OF AIRCRAFT QUALITY MAGNESIUM AND HEAT TREATED FOR MAXIMUM FATIGUE STRENGTH. WE FEEL THIS WHEEL IS THE BEST VALUE ON THE MARKET TODAY, AND ALSO FITS DIRECTLY ON THE SPRITE. THIS WHEEL CAN BE MADE TO FIT ANY FOUR BOLT PATTERN WITH THE MAXIMUM DIAMETER AT BOLT CENTERS OF 4 5/8".

13" WHEEL WITH 4 1/2" RIM \$42.95
13" WHEEL WITH 5" RIM \$44.95



5. ADAPTOR RINGS

BMC TO VW \$ 48.50
FORD TO VW



6. FIBRE GLASS BODY COMPLETE (color impregnated)

\$395.00

7. ENGINE COMPONENTS (BMC "A" TYPE)

A) HIGH COMPRESSION PISTONS WITH RINGS AND PINS	\$85.00 SET.
B) LEAD INDIUM ROD AND MAIN BEARINGS	\$17.20 SET.
C) RACING CRANKSHAFT	\$68.00
D) FULL COATING PIN CONNECTING ROD	\$
E) SPECIAL CAMS	\$67.00
	EXCHANGE.....\$55.00
F) CYLINDER HEADS	
-FORMULA JR. (BARE HEAD PORTED AND POLISHED)	\$125.00 EXCHANGE
-WITH LARGE VALVES AND DBLE SPRINGS	\$185.00 EXCHANGE
G) EXHAUST HEADER	\$55.00
H) INTAKE MANIFOLD FOR WEBER CARBURETOR	\$35.00
I) 45 DCOE WEBER CARBURETOR	\$96.50
J) LARGE VALVES -INTAKE 1-1/4"	\$4.50 EA.
-EXHAUST 1-1/8"	\$4.50 EA.
K) SPECIAL VALVE SPRINGS - OUTER	\$1.30 EA.
- INNER	\$1.00 EA.
L) FLY WHEEL - LIGHT WEIGHT	\$18.50 EA. EXCHANG
M) COMPETITION CLUTCH	\$61.99 OUTRIGHT
N) GEARS:	
VW BOX BARREL CASE TRANSPORTER RATIO	
4TH GEAR SET)	
VW SPIT CASE)	
3RD GEAR SET)	PRICES ON REQUEST
4TH GEAR SET)	
BMC GEAR BOX	
SPORTS CAR CLOSE RATIO	\$74.22 SET
FORMULA JR. CLCSE RATIO	\$160.00 SET

SPORTS CAR RACING EQUIPMENT

6

AUSTIN HEALY SPRITE COMPETITION EQUIPMENT

ENGINE	PART NO	PRICE
PISTON ASSEMBLY FLAT TOP (9.3:1)		
AVAILABLE SIZES, STANDARD, .010, .020, .030	2A 946	\$11.91 EA
COMPETITION PISTONS .040, .060	Q 2302	59.50
CAMSHAFT	2A 948	29.96 EA
SPECIAL CAMSHAFTS - TAILORED TO SPECIAL ENGINE MODIFICATIONS		45.00 EXCH.
INNER VALVE SPRING	AEA 401	.19 EA
OUTER VALVE SPRING	2A 950	.46 EA
TOP VALVE SPRING COLLAR	AEA 402	.29 EA
BOTTOM VALVE SPRING COLLAR	AEA 432	.19 EA
EXHAUST VALVE - EXTRA HEAVY DUTY	AEA 400	3.83 EA
LARGE INTAKE VALVE	Q 2494	
LARGE EXHAUST VALVE	Q 2495	
CYLINDER HEAD ASSEMBLY - PORTED & POLISHED	KQ 2304	99.50 EXCH.
BLANKING SLEEVE FOR THERMOSTAT	11G 176	1.00 EA
CARBURETOR - 1-1/4"	Q 2343	77.28 PAIR
INLET MANIFOLD KIT FOR 1-1/4" CARBURETORS	Q 2544	21.29 EA
WEBER CARBURETORS	KQ 5001	82.95 EA
INLET MANIFOLD FOR WEBER CARBURETOR	KQ 5002	37.50 EA
COLD AIR BOX	Q 2350	11.36
CRANKSHAFT - COMPETITION TIE	AEA 406 (AEA 440)	59.93 EA
OIL COOLER KIT	Q 2342	56.45 EA
DISTRIBUTOR - COMPETITION	40656	24.50 EA
FLYWHEEL - SPECIALLY LIGHTENED	KQ 6001	18.50 EXCH.

CLUTCH & GEARBOX

COMPETITION CLUTCH ASSEMBLY, COMPRISING:		
CLUTCH COVER ASSEMBLY)		
CLUTCH DRIVEN PLATE)		
RELEASE BEARING)		
DISTANCE PIECE - COVER TO FLYWHEEL)	AEJ 31	61.99 EA
RETAINING SPRING FOR RELEASE BEARING)		
BOLTS - CLUTCH TO FLYWHEEL)		

CLUTCH & GEARBOX Cont'd.	PART NUMBER	SUGGESTED RETAIL PRICE
CLOSE RATIO GEARS - SET	Q 2354A	74.22 SET
COMPRISING:		
3RD SPEED GEAR	2A 3299	13.98 EA
2ND SPEED GEAR	22A 37	16.87 EA
LAYGEAR (CLUSTER)	22A 39	23.87 EA
1ST MOTION SHAFT (DRIVE GEAR)	22A 40	18.13 EA
REAR AXLE		
DIFFERENTIAL ASSEMBLY - 5.315:1	ATA 7073	77.28 EA
DIFFERENTIAL ASSEMBLY - 4.815:1	2A 7225	77.28 EA
DIFFERENTIAL ASSEMBLY - 4.55:1	ATA 7093	77.28 EA
DIFFERENTIAL ASSEMBLY - 3.73:1	ATA 7239	84.00 EA
CROWN WHEEL & PINION - 5.375:1**	ATA 7040	32.46 PAIR
CROWN WHEEL & PINION - 4.55:1**	8G 7129	25.47 PAIR
CROWN WHEEL & PINION - 3.73:1**	ATA 7240	28.96 PAIR
** WHEN FITTING CROWN WHEEL AND PINIONS ONLY, NOSE PIECE, PART NUMBER ATA 7167 MUST BE USED.		29.46 EACH
BRAKES		
WIRE WHEEL AND DISC BRAKE CONVERSION KIT	Q 2337	501.76
8" FRONT BRAKES - CONVERSION KIT	KQ 4001	56.50
BRAKE LININGS - COMPETITION TYPE	KQ 4002	10.40
SUSPENSION		
ANTI-ROLL BAR - KIT	Q 2315	18.50
STIFF SHOCK ABSORBER VALVE (FRONT)	Q 2325	3.36 EA
STIFF SHOCK ABSORBER VALVE (REAR)	Q 2333	3.36 EA
STIFF FRONT SPRINGS	Q 2334	16.91 EA
STIFF REAR SPRINGS	Q 2335	24.19 EA
ROAD WHEELS		
MAGNESIUM WHEELS 4½"x13	KQ 4003	42.95 EA
MAGNESIUM WHEELS 5"x13"	KQ 4004	44.95 EA
SPECIAL CONE LUG NUTS	KQ 4005	.95 EA
EXHAUST SYSTEM		
DUAL EXHAUST SYSTEM KIT - TWIN TAIL PIPES	Q 2347	43.68 EA
SPECIAL TUNING BOOK	AKD 1021 A	1.00 EA

AUSTIN HEALEY 3000 COMPETITION EQUIPMENT

8

ENGINE	PART NUMBER	SUGGESTED RETAIL PRICE
CAMSHAFT-COMPETITION TYPE (INLET OPENS 5°BTDC, CLOSES 45°ABDC, EXHAUST OPENS 51°BBDC, CLOSES 21°ATDC)	AEC 2029	\$89.04 EA
CAMSHAFT-COMPETITION TYPE, (INLET OPENS 16°BTDC CLOSES 56°ABDC, EXHAUST OPENS 51°BBDC, CLOSES 21° ABDC)	AEC 865	63.67 EA
DISTRIBUTOR-COMPETITION TYPE, USE WITH CAMSHAFT AEC 865	LT 17001	40.32
INLET MANIFOLD-3x2" SU CARBS	H 8788	120.96 EA
SU (2") HD8 CARBURETOR-TRIPLE INSTALLATION	H 8793	60.48 EA
COLD AIR BOX-TWIN CARBS	H 8427	26.88 EA
FLARE PIPE-2" CARBURETOR	H 8399	13.44 EA
OIL COOLER	AEH 113	42.00 EA
CYLINDER HEAD-PORTED AND POLISHED	KQ 7001	136.00 EXCH.

GEARBOX & OVERDRIVE

CLOSE RATIO GEARBOX	H 8794	571.20 EA
OVERDRIVE ASSEMBLY 28% (.788:1)	1B 3839	297.36

BRAKES

REAR DISC BRAKE KIT	H 8462	120.96 EA
---------------------	--------	-----------

SUSPENSION

FRONT SPRING-COMPETITION	1H 4092	10.20 EA
FRONT SPRING-COMPETITION	1H 4055	12.73 EA
REAR SPRING-COMPETITION (14 LEAF)	H 8776	42.00 EA
ANTI-ROLL BAR-COMPETITION TYPE	7E 1721	15.62 EA
FRONT TELESCOPIC DAMPERS	H 8792	120.96 PR
REAR DAMPERS-LARGE ADJUSTABLE	H 8437	66.75 PR

ROAD WHEELS

ROADWHEEL-60 SPOKE, STEEL RIM	AHH 8001	37.70 EA
-------------------------------	----------	----------

MISCELLANEOUS

RACING SCREEN-FULL WIDTH	H 8343	73.92 EA
AERO SCREEN	7H 1713	39.11 EA
SEAT-LIGHTWEIGHT	Q 2609	60.48 EA

MGA 1600cc COMPETITION EQUIPMENT

ENGINE	PART NUMBER	SUGGESTED RETAIL PRICE
PISTON ASSEMBLY FLAT TOP (9.25:1) AVAILABLE IN STANDARD, .010", .020", .030", .040"	12H 173	\$10.61 EACH
CONNECTING ROD ASSEMBLY (FULLY FLOATING) Nos. 2 & 4	AEH 642	19.98 EACH
CONNECTING ROD ASSEMBLY (FULLY FLOATING) Nos. 1 & 3	AEH 644	19.98 EACH
BLANKING PLATE (THERMOSTAT BY-PASS)	11G 176	1.00 EACH
CARBURETORS 1 3/4" (H6)	AUC 780	112.47 PAIR
INLET MANIFOLD FOR 1 3/4" CARBURETORS	AEH 200	22.47 EACH
CYLINDER HEAD, PORTED AND POLISHED	KQ 1601	112.50 EXCH.
OUTER VALVE SPRING	1H 1111	.82 EACH
INNER VALVE SPRING	1H 1112	.57 EACH
OIL COLLER KIT ASSEMBLY	8G 2282	93.82 EACH
CLUTCH & GEARBOX		
8" COMPETITION CLUTCH ASSEMBLY	AHH 5457	120.61 EACH
CLOSE RATIO GEARS		
FIRST MOTION SHAFT	1H 3297	29.86 EACH
LAYGEAR (CLUSTER)	1H 3298	35.47 EACH
SECOND SPEED GEAR	1H 3299	18.45 EACH
THIRD SPEED GEAR	1H 3300	17.13 EACH
REAR AXLE		
CROWN WHEEL & PINION 4.1:1 RATIO	ATB 7240	81.65 EACH
CROWN WHEEL & PINION 3.9:1 RATIO	ATB 7236	67.63 EACH
CROWN WHEEL & PINION 4.5:1 RATIO	ATB 7146	33.89 EACH
STEERING & SUSPENSIONS		
LIGHT ALLOY, WOOD RIM 16 1/2" STEERING WHEEL	AHH 5800	49.53 EACH
SHOCK ABSORBER, FRONT RIGHT HAND ANDREX	AHH 5609	24.11 EACH
SHOCK ABSORBER, LEFT HAND FRONT ANDREX	AHH 5610	24.11 EACH
ROAD WHEELS		
60 SPOKE WIRE WHEEL	AHH 8001	37.50 EACH

RACING PLUGS

10

WE RECOMMEND THE FAMOUS LODGE RACING PLUGS. THE FOLLOWING PLUGS EFFECTIVELY COVER ALL OF THE ENGINES AND MODIFICATIONS DESCRIBED IN THIS CATALOGUE.

DESCRIPTION	CHOICE OF PLUG	WARM UP	PRICES
FORMULA JR. AUSTIN HEALEY SPRITE AUSTIN HEALEY 3000 MGA 1600 cc	RL49 OR RL50 RL47 OR RL49 RL47, RL49 RL 47, RL49	HBLN HBLN HBLN HBLN	RL47.....\$4.00 ALL OTHERS....\$2.15

LODGE				CROSS REFERENCE REPLACEMENT			
Thread Size & reach	Racing	Extended Tip	Regular	Champion	Autolight	KLG	Bosch
HOT 14MM. 3/4" REACH COLD	% RL47	2HLNY	2HLN	N3	AG3	FE220	W240T2, W280T20
			3HLN	N58R	AG603	FE100	W270T17, W260T2 W260T20
	RL49			N55T	AG403	FE280	W290T17, W310T17
	RL50					FE290, FE300	W340T17
	RL51			N53T	AG203	FE300, FE310	W370T17, W400T17
	RL52					FE320	W440T17
	RL53					FE340	W500T2

SELECTION OF A CORRECT RACING PLUG

THE FINAL SELECTION OF A PROPER HEAT RANGE FOR YOUR CAR IS OF COURSE GOVERNED BY THE PARTICULAR STATE OF TUNE, AND THE CLIMATIC CONDITION ENCOUNTERED ON RACING DAY. WITH THIS IN MIND, A FEW NOTES MAY BE IN ORDER TO AID THE COMPETITOR IN HIS INITIAL PURCHASE OF PLUGS.

THE RL47 LODGE PLUG, WARMEST OF THE RACING SERIES, IS POSSESSED OF REMARKABLE VERSITILITY, AND IS PARTICULARLY WELL SUITED TO FITTMENT IN PRODUCTION CARS USED FOR RACING. OWNERS OF PRODUCTION CARS FITTED WITH BMC TYPE "A, B OR C" ENGINES WOULD DO WELL TO TRY THE RL47 BEFORE ATTEMPTING A COLDER RANGE.

THE RL47 AND RL50 ARE RECOMMENDED BY US FOR USE IN OUR FORMULA JR. AND IN OTHER CARS FITTED WITH THE BMC TYPE "A" ENGINE IN A HIGH STATE OF TUNE. USERS OF THIS PLUG MAY FIND IT NECESSARY TO START AND WARM UP THE ENGINE TO OPERATING TEMPERATURE BEFORE FITTING THESE COLDER RACING PLUGS.

THE RL51 LODGE PLUG CAN ALSO BE USED IN THESE MACHINES ON A VERY HOT DAY, OR WHEN SPECIAL TUNING CIRCUMSTANCES DEMAND.

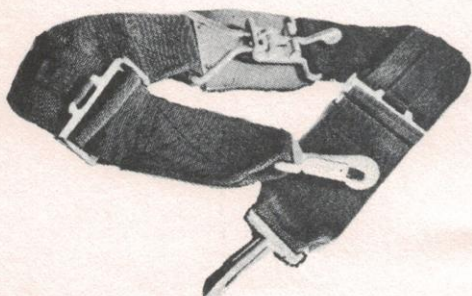
TO CHECK FOR PROPER HEAT RANGE IT IS ABSOLUTELY ESSENTIAL THAT CORRECT CARBURETION OF THE ENGINE BE ESTABLISHED BEFORE CARRYING OUT A PLUG CHECK.

THE CORRECT TYPE OF RACING PLUG FOR USE IN A PARTICULAR ENGINE FOR A SPECIFIC EVENT, CAN BE CHOSEN BY EXAMINING THE PLUGS AFTER A PERIOD OF FULL THROTTLE, FULL POWER RUNNING.

THE ENGINE SHOULD BE HELD AT FULL POWER FOR AT LEAST 30 SECONDS. THE IGNITION SHOULD THEN BE SWITCHED OFF AND NEUTRAL GEAR SELECTED SO THAT THE ENGINE WILL NOT BE TURNED OVER BY THE TRANSMISSION. THE APPEARANCE OF THE PLUGS WILL THEN INDICATE THEIR HEAT CONDITION AT MAXIMUM DUTY. IDEALLY, THE INSULATOR OF THE PLUGS SHOULD BE DISCOLOURED TO A LIGHT BROWN. THE CENTER ELECTRODE SHOULD BE SHINY BLACK, EXCEPT AT THE ACTUAL POINT WHERE THE H.T. CURRENT HAS JUMPED TO THE GROUND POINT. THIS PORTION SHOULD BE NORMAL COLOR. THE GROUND POINT AND THE BODY SHOULD ALSO BE SHINY BLACK.

IF THE INSULATOR IS COVERED WITH A WET, BLACK DEPOSIT IT WOULD INDICATE THAT TOO COLD A PLUG IS BEING USED. IF THE ORIGINAL PINK SINTOX INSULATOR NOSE HAS TURNED WHITISH, AND MINUTE BROWN PIN-POINTS HAVE APPEARED THIS INDICATES THAT THE PLUG IS TOO HOT. HOWEVER, IT IS ABSOLUTELY ESSENTIAL THAT THE CORRECT CARBURETION SHOULD BE ESTABLISHED BEFORE CARRYING OUT THE PLUG CHECK. A WEAK MIXTURE GIVES THE PLUG AN APPEARANCE VERY SIMILAR TO THAT GIVEN BY TOO HOT A PLUG. AN OVER-RICH MIXTURE IS INDICATED BY A DRY, BLACK, SOOTY DEPOSIT.

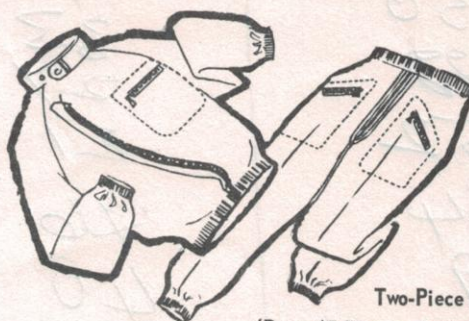
RACING ACCESSORIES



\$16.95 ppd.

COMPETITION SEAT BELTS

Manufactured to meet SCCA specifications. Identical to U.S. Air Force with exception of snap ends to slip into your eye-bolts. Quick release buckle. All brand new nylon webbing and stitching. Available in Black only. Belt width- 3".



Two-Piece \$16.95
(Pants \$7.95ea. or Jacket \$9.95 ea.)

IMPORTED ITALIAN Sala-Sport Racing Suits

These distinctive garments feature elastic gathered wrists, waists, and ankles. Have mandarin collar. Roomy pockets with heavy duty zipper closures. Tailored poplin fabric. These distinctive garments are original Italian Racing Suits preferred throughout Europe for comfort and utility. Not only most practical for races, rallies, are also excellent for informal lounging. Available in Black, Red and French Racing Blue. Men's sizes only....36, 38, 40, 42, 44



\$5.95 ea. ppd.
(\$11.90 per pr. ppd.)

"RAYDYOT" No. M/44 RACING MIRRORS

FIA approved, British made Racing Mirror. Shatterproof mirror in your choice of flat or convex glass mounted in streamlined spun aluminum cone housing (53/4 oz.). Adjustable base with positive locking device. Recommended for cowl mounting. Specify flat or convex glass.
Replacement Lenses...Convex \$2.00...Flat \$1.50.

IMPORTED ITALIAN Sala-Sport Shorties

\$7.50 pr. postpaid



IMPORTED ITALIAN Sala-Sport Driving Gloves
In skin-soft Italian leather well ventilated, double leather palms. Four styles in all sizes, including very sm. and very lg. Your choice of all blk; tan & natural brown; white leather back & tan palm; knit back & brown palm. Sizes 6 1/2-10
\$7.95 pr. postpaid



BELL 500 TX RACING CRASH HELMET

New energy absorbing non-resilient liner as approved by the Snell Fund Study. This study conducted by Geo. G. Snively, M.D. is the first comprehensive racing crash helmet test ever made in this country. Sizes 6 3/4 through 7 1/2. gh 7 1/2. Helmet with visor \$38.50 postpaid, less visor \$37.00 ppd.



Bell Snap-On Bubble Shields

Made of non-inflammable plastic. Are streamlined and shatter resistant. Tested at over 200 MPH and give undistorted vision. Please specify Part No. and Helmet size

SNAP-ON

Clear Bubble Shield
Clear with Sunshade
Tinted Bubble Shield
Tinted with Sunshade

Cat. No.	List Price
235-1	\$4.95
235-2	\$5.50
235-3	\$5.50
235-4	\$5.95

FLIP-UP

Clear Flip-up Shield
Clear with Sunshade
Tinted Flip-up Shield
Tinted with Sunshade

Cat. No.	List Price
236-1 (L or S) †	\$7.95
236-2 (L or S) †	\$8.50
236-3 (L or S) †	\$8.50
236-4 (L or S) †	\$8.95

† "FLIP-UP" model comes in two sizes:

S-(small) fits BELL "500TX" Helmets up to and including size 7.

L-(large) fits BELL "500TX" Helmets sizes 7-1/8 and larger.



Bell Flip-Up Bubble Shields



FLAME PROOFING

Flame proof your cotton, silk, linen or wool suit with "Official Flame-Proof Chemical's" No. 55. Flame retarding solution can be applied by spraying or dipping. Carries the State Fire Marshall's seal.

\$1.50 ppd. (1 1/2 lb. pkg.)